



On-Site Components, LLC

On-Site Components, LLC
3214 Thorngrove Circle
Riverton, Utah 84065

Office: 801-553-9948
Fax: 801-553-9946
www.onsitecomponents.com
sales@onsitecomponents.com

Applications:

- Computers
- Process control instrumentation
- Power supplies
- Communication equipment

Features:

- Excellent flame resistance
- Non-inductive types available
- Very low or very high ohmic values available upon request.

Explanation of Part Numbers:

KNP	2W	103	J	T	XX
1	2	3	4	5	6

1 Style:

KNP - Standard Wirewound Resistors
 KNPS - Miniature Wirewound Resistors
 KNS - Snap-in Wirewound Resistors

2 Wattage:

1/4 = 1/4 watt	2 = 2 watt	7 = 7 watt	10 = 10 watt
1/2 = 1/2 watt	3 = 3 watt	8 = 8 watt	
1 = 1 watt	5 = 5 watt	9 = 9 watt	

3 Nominal Resistance Value:

E24 Series (5% Tolerance)

The first two digits are significant figures of resistance and the third digit denotes the number of zeros (decimal point is expressed by the letter "R").

i.e. 102 = 1k Ω
1R2 = 1.2 Ω

E96 Series (1% Tolerance)

The first three digits are significant figures of resistance and the fourth digit denotes the number of zeros.

i.e. 1001 = 1k Ω
10R0 = 10 Ω

4 Tolerance:

F = \pm 1%	J = \pm 5%
G = \pm 2%	K = \pm 10%

5 Packaging:

T = Tape & Reel	B = Bulk
TB = Tape & Box	

6 Lead Forming:

PN = Panasert Type	PA1 = Avisert Type 1
PA2 = Avisert Type 2	PA3 = Avisert Type 3

* For all other requests, please consult factory.

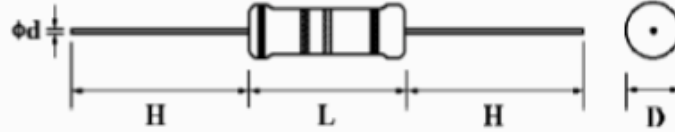


On-Site Components, LLC

On-Site Components, LLC
 3214 Thorngrove Circle
 Riverton, Utah 84065

Office: 801-553-9948
 Fax: 801-553-9946
www.onsitecomponents.com
sales@onsitecomponents.com

KNP & KNPS Type:



(1) KNP Type

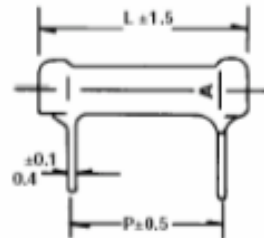
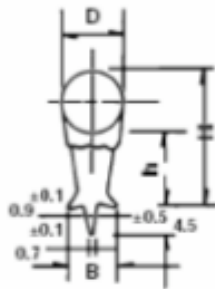
Series	Normal Size				Resistance Range
	D ± 1	L Max.	H ± 3	ød ^{+0.02/-0.05}	
KNP 1/2W	4.0	10.0	28	0.7	.05Ω~250Ω
KNP 1W	5.0	12.0	28	0.7	.01Ω~400Ω
KNP 2W	5.5	16.0	28	0.8	.01Ω~470Ω
KNP 3W	6.5	17.5	28	0.8	.05Ω~600Ω
KNP 5W	8.0	25.0	38	0.8	.01Ω~1KΩ
KNP 7W	8.0	30.0	38	0.8	0.1Ω~1KΩ
KNP 8W	8.0	40.0	38	0.8	.1Ω~1.5KΩ
KNP 9W	8.0	53.0	38	0.8	.1Ω~1.5KΩ

(2) KNPS Type

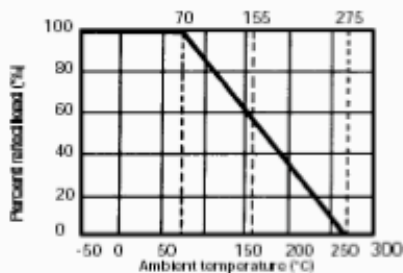
Series	Normal Size				Resistance Range
	D ± 1	L Max.	H ± 3	ød ^{+0.02/-0.05}	
KNPS 1W	4.0	10.0	28	0.6	.05Ω~250Ω
KNPS 2W	5.0	12.0	28	0.7	.01Ω~400Ω
KNPS 3W	5.5	16.0	28	0.8	.01Ω~470Ω
KNPS 5W	6.5	17.5	28	0.8	.05Ω~600Ω
KNPS 7W	8.0	25.0	38	0.8	0.1Ω~1KΩ
KNPS 8W	8.0	30.0	38	0.8	0.1Ω~1KΩ
KNPS 9W	8.0	40.0	38	0.8	.1Ω~1.5KΩ
KNPS 10W	8.0	53.0	38	0.8	.1Ω~1.5KΩ

(3) KNS Type

Series	Dimension (mm)						Resistance Range
	D Max	L ± 1.5	P ± 0.5	H ± 1	ht 1	B ± 0.5	
KNS 2W	7	19	8	19.0	12	4.5	0.1Ω~50Ω
KNS 3W	8	21	10	19.0	13	4.5	0.5Ω~50Ω
KNS 5W	10	26	15	21.5	13	6.0	0.5Ω~100Ω
KNS 7W	10	31	20	21.5	13	6.0	1Ω~1KΩ
KNS 8W	10	41	30	21.5	13	6.0	1Ω~1.5KΩ
KNS 10W	10	54	43	21.5	13	6.0	1Ω~2KΩ



Derating Curve



Heat Rise Chart

